



Red Hat

KNATIVE&TEKTON

BUILD&PIPELINES

Red Hat Summit 2019

VINCENT BATTS

Engineer

```
$> finger $(whoami)
```

```
Login: vbatts
```

```
Directory: /home/vbatts
```

```
Such mail.
```

```
Plan:
```

```
OHMAN
```

```
$> id -Gn
```

```
devel opencontainers docker appc redhat golang slackware
```

```
Name: Vincent Batts
```

```
Shell: /bin/bash
```

DISCLAIMER



The content set forth herein does not constitute in any way a binding or legal agreement or impose any legal obligation or duty on Red Hat. This information is provided for discussion purposes only and is subject to change for any or no reason.

SERVERLESS



SERVERLESS

FaaS

SERVERLESS

FaaS

Actually Servers?

SERVERLESS

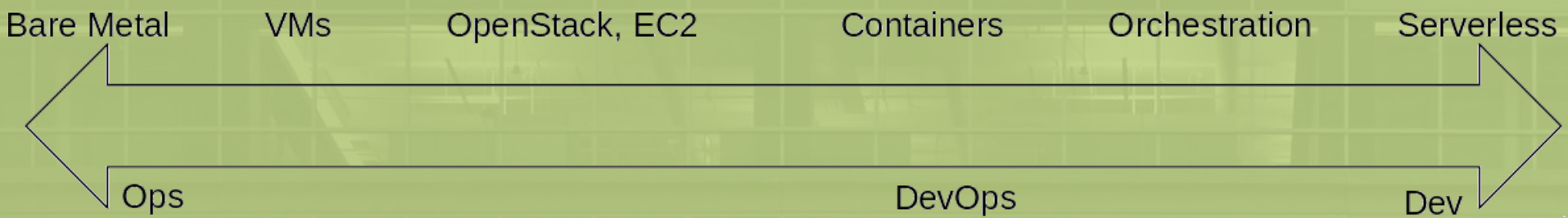
FaaS

Actually Servers?

Events

Containers?

SERVERLESS



KNATIVE

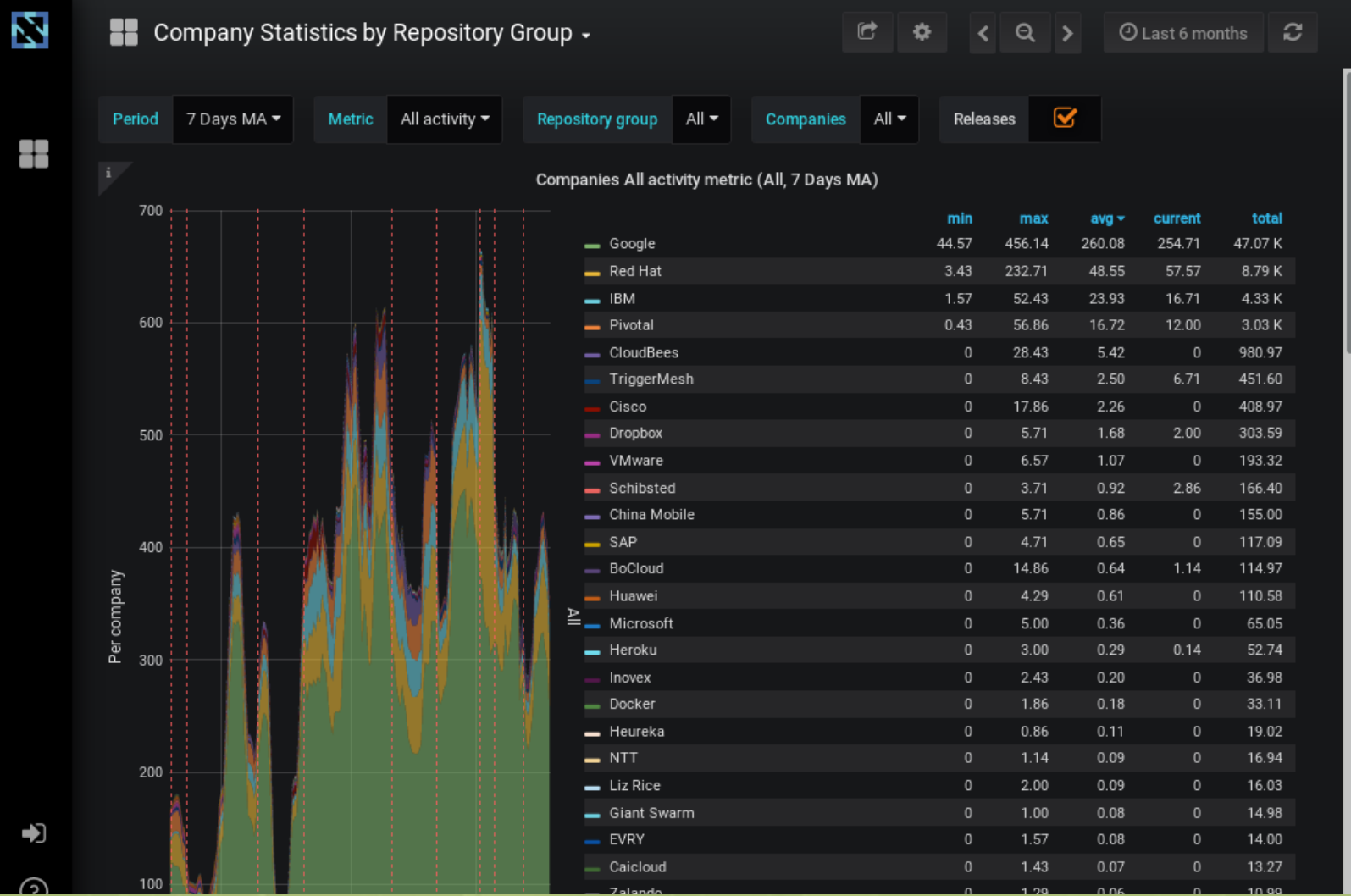
- What is Knative (knative.dev and github.com/knative)
 - A framework built on top of Kubernetes and Istio to build, trigger, and run Serverless functions

KNATIVE

- What is Knative (knative.dev and github.com/knative)
 - A framework built on top of Kubernetes and Istio to build, trigger, and run Serverless functions
- What is in Knative
 - A collection of CRDs and Controllers
 - Serving: Route requests; auto scale; invoke serverless functions.
 - Eventing: Receive, persist, filter, and deliver Event
 - Build: steps to build from source to image

KNATIVE

- What is Knative (knative.dev and github.com/knative)
 - A framework built on top of Kubernetes and Istio to build, trigger, and run Serverless functions
- What is in Knative
 - A collection of CRDs and Controllers
 - Serving: Route requests; auto scale; invoke serverless functions.
 - Eventing: Receive, persist, filter, and deliver Event
 - Build: steps to build from source to image
- Who are developing Knative
 - Led by Google, joined by Red Hat, IBM, Pivotal...



ALSO BUILDS

Containers

CI/CD

Don't we have enough of those?

CONTAINERS

The background features a stylized, low-angle view of a city skyline. The buildings are rendered in a light, semi-transparent orange color, creating a layered effect. The sky is a pale yellow, and the overall composition is dominated by warm, geometric shapes and lines.

CONTAINERS



Source

KNATIVE/BUILD

- Templated API resource to take an input (like a git repo URL) and produce a container to serve
- Narrowly focused on serverless use-case
- A number of templates available, including s2i images and Dockerfile with buildah
- something almost, but not quite entirely unlike CD

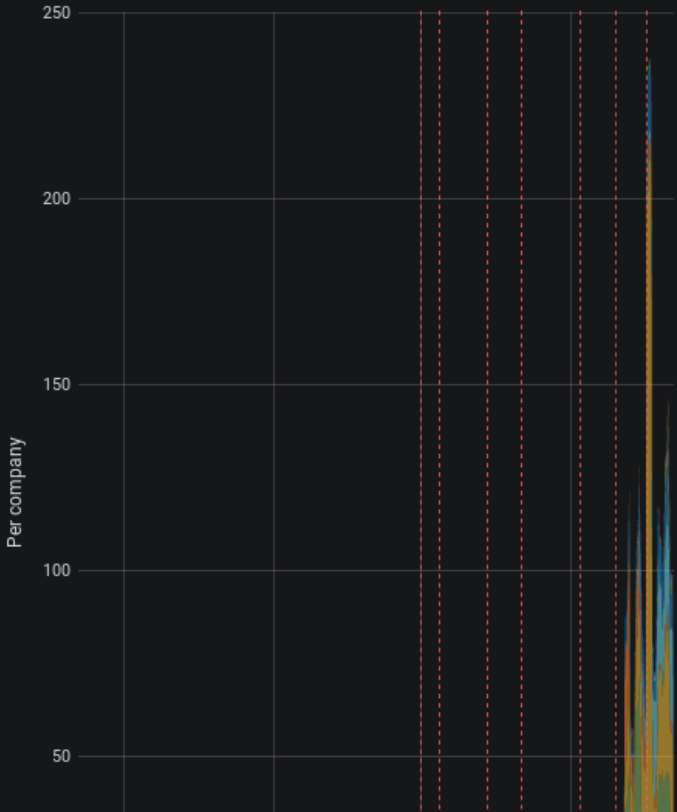
TEKTON

- Also a container build resources, but allows for much broader than *only* serverless
- Split from Knative into its own org (also now a part of <https://cd.foundation/>)
- Expected to underpin the basics needed by knative/build
- Very analogous to our BuildStrategy and Pipelines in OpenShift

Company Statistics by Repository Group

Period: 7 Days MA |
 Metric: All activity |
 Repository group: All |
 Companies: All |
 Releases:

Companies All activity metric (All, 7 Days MA)



| | min | max | avg | current | total |
|---------------|------|--------|-------|---------|--------|
| Google | 0.14 | 71.29 | 10.41 | 28.86 | 3.00 K |
| Red Hat | 0 | 184.29 | 9.65 | 18.29 | 2.78 K |
| Pivotal | 0 | 35.71 | 3.06 | 1.14 | 882.08 |
| IBM | 0 | 37.29 | 2.88 | 18.43 | 830.53 |
| CloudBees | 0 | 17.57 | 1.86 | 5.86 | 535.94 |
| Heroku | 0 | 4.00 | 0.18 | 2.71 | 52.00 |
| Alauda | 0 | 3.43 | 0.11 | 0 | 31.99 |
| China Mobile | 0 | 1.29 | 0.11 | 0 | 31.07 |
| Huawei | 0 | 1.86 | 0.10 | 0 | 30.01 |
| CNCF | 0 | 3.14 | 0.10 | 0 | 28.95 |
| TriggerMesh | 0 | 1.43 | 0.09 | 0 | 27.04 |
| config | 0 | 1.43 | 0.08 | 1.43 | 23.56 |
| Fairfax Media | 0 | 1.00 | 0.04 | 0 | 12.04 |
| Independent | 0 | 0.71 | 0.04 | 0 | 11.94 |
| VMware | 0 | 0.57 | 0.03 | 0 | 8.96 |
| NTT | 0 | 0.57 | 0.03 | 0 | 8.90 |
| Inovex | 0 | 1.00 | 0.03 | 1.00 | 8.87 |
| Armory | 0 | 0.86 | 0.02 | 0 | 6.02 |
| SalesForce | 0 | 0.71 | 0.02 | 0 | 5.95 |
| Yunify | 0 | 0.29 | 0.02 | 0.14 | 4.97 |
| Ticketmaster | 0 | 0.14 | 0.02 | 0 | 4.88 |

WHERE WE ARE



Run as root

Run as non-root

Privileged

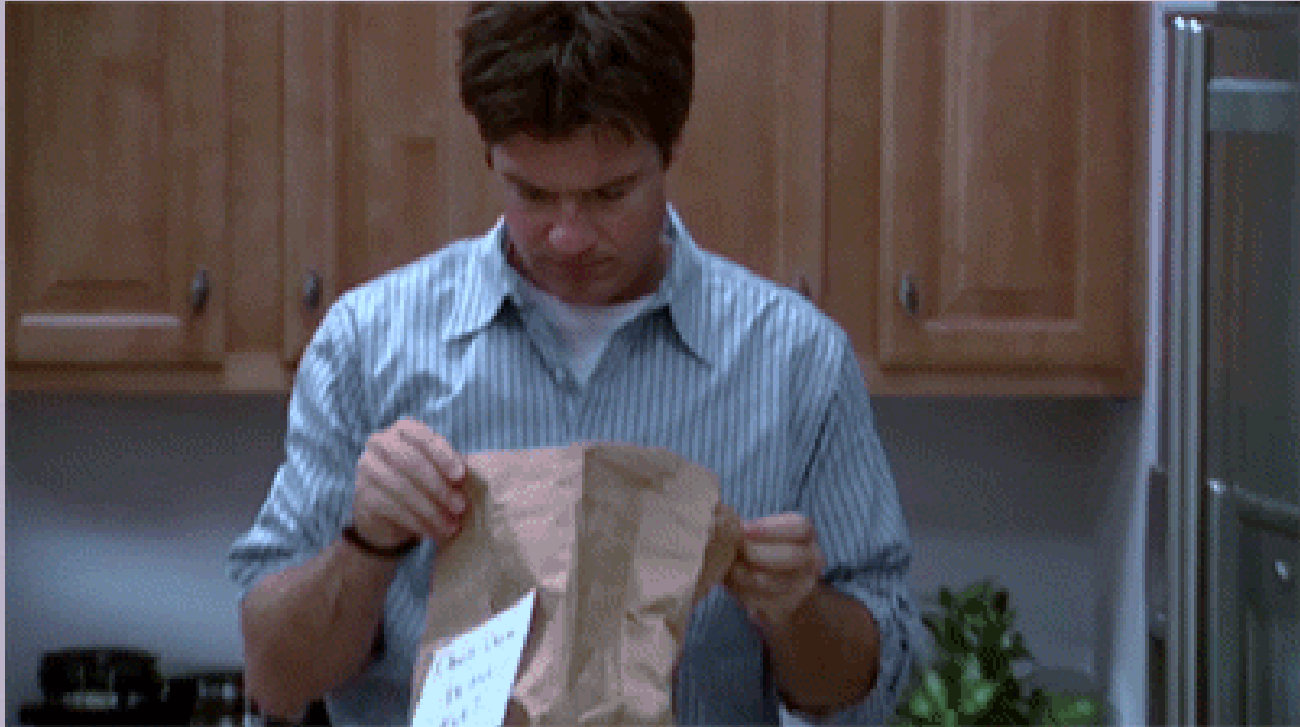
| | root | non-root |
|----------------|------|----------|
| Privileged | | |
| Non-Privileged | | |

| | root | non-root |
|----------------|------|----------|
| Privileged | | |
| Non-Privileged | | |

Non-Privileged

| | root | non-root |
|----------------|------|----------|
| Privileged | | |
| Non-Privileged | | |

| | root | non-root |
|----------------|------|----------|
| Privileged | | |
| Non-Privileged | | |



WHY THESE PROJECTS?

Kubernetes is the platform

feeling of built in primitives

enable consistency

MORE INFORMATION

bit.ly/rht-summit19-serverless-build

github.com/redhat-developer-demos/knative-tutorial

github.com/openshift-cloud-functions/Documentation



THANK YOU!

Vincent Batts

vbatts@